



SLAN[®]-48P

Real-Time PCR System



SLAN[®]-48P

Real-Time PCR System

1

Innovative hardware design brings outstanding performance

- The patent spot-to-spot temperature compensation technology enables well-to-well uniformity with an accuracy of $\pm 0.1^{\circ}\text{C}$;
- Long-lasting high-intensity LEDs which are reliable and maintenance-free;
- The unique lateral-capture signal collection technology results in better detection sensitivity and smooth amplification curves;
- Auto gain setting; free of background calibration and ROX reference calibration;
- Support FAM/HEX/Cy5 3-plex detection without crosstalk.

2

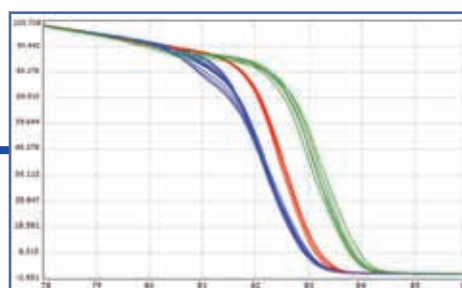
An ideal tool to perform HRM assays

- Advanced optical system enables signal acquisition with high sensitivity and efficiency;
- Tight temperature uniformity (within $\pm 0.1^{\circ}\text{C}$) leads to reliable consistent HRM data;
- Support both Step scanning mode and Continuous scanning mode. complete HRM assay within 30min using continuous scanning mode;
- Sophisticated cluster algorithm assures complicated data analysis.

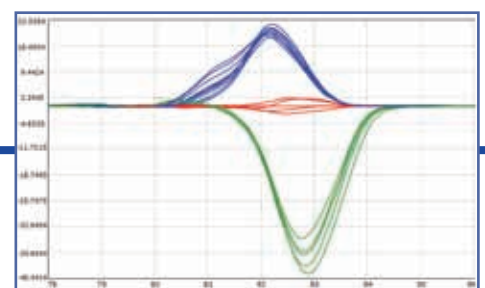
3

Accurate and reliable data

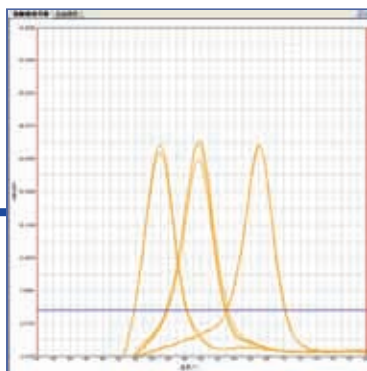
- Correlation coefficient: $-0.999 \sim -1.000$
- Reproducibility: $\text{CV} < 0.5\%$
- Sensitivity: detection of one starting template copy
- Broad dynamic range: $1 \sim 10^6$ copies/ml
- High resolution: easily discriminates between 1000 and 2000 copies



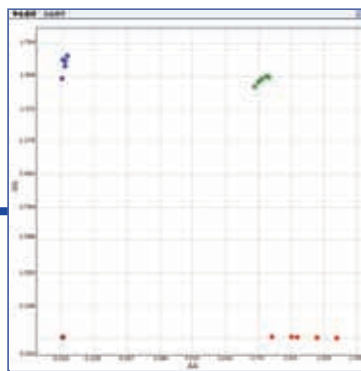
Normalized melting curve



Melting curve difference plot



Derivative Melting curve



Allele discrimination plot

Powerful yet easy to use operation software

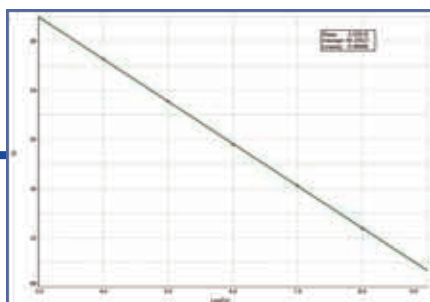
- User-friendly and intuitive user interface, easy to get started;
- Creatively introduce Project management to experiment workflow, no lengthy set-up requirements;
- Unique multi-tube mode combined with advanced rule functionality copes with complicated multi-targets experiment analysis;
- A broad range of analysis applications: Quantification/Qualification, Allelic Discrimination, Multiplex Melting Curve analysis, HRM;
- User-defined patient report editor;
- Simple import and export functions provide easy access to LIMS.

4

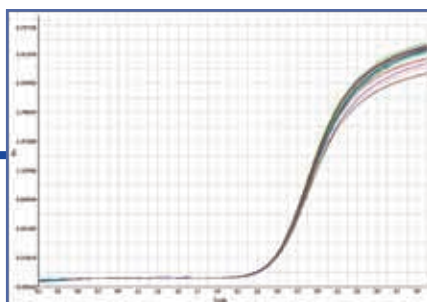
Support and service

- 18 months guarantee, convenient and fast after-sale service;
- Highly stable and durable; maintenance-free;
- High performance at an affordable price;
- Low noise, low power consumption, robust, compact and elegant;
- Open platform: supports almost all of universal PCR reagents and plastics.

5



Correlation coefficient: -0.99996



Reproducibility: CV < 0.5%

Specification

Performance

Product model	SLAN® -48P		
Sample capacity	48 wells (6*8)		
Reaction Volume	15 - 100µL (15-50µL recommended)		
Consumable	0.2ml PCR tubes, 8-well strips, 48-well plates		
Sensitivity	1 copy		
Linearity range	10 ⁰ -10 ¹⁰		
Reproducibility	CV<0.5% across 48 wells		
Correlation coefficient	-0.99 to -1.00		
Resolution	can discriminate between 1000 copies and 2000 copies		
Dyes and probes	Ch1 FAM™/SYBR Green®	Ch2 VIC®/HEX™/JOET™/TET™	
	Ch3 CY5™		

Hardware

Thermal Unit

Temperature control unit	semiconductor
Temperature control mode	tube control block control
Temperature range	4~99℃
Max ramp rate	4.0℃/s
Temperature accuracy	±0.1℃
Temperature uniformity	±0.1℃
Hot-lid	30-108℃ (default 105℃, adjustable) electronic automatic hot-lid

Optical Unit

Light Source	LED (free of maintenance)		
Detector	photosensor		
Excitation	Ch1 470 nm	Ch2 530nm	Ch3 630nm
	Ch4 custom-made	Ch5 custom-made	Ch6 custom-made
Emission	Ch1 510 nm	Ch2 565nm	Ch3 665nm
	Ch4 custom-made	Ch5 custom-made	Ch6 custom-made
Custom-made channels ¹	Up to 6 channels, support 4-plex detection		

Software

Application	Absolute Quantification (AQ) , Positive/Negative Allelic Discrimination (TaqMan® endpoint method)
	Multiplex Melting Curve analysis , High Resolution Melting Curve analysis
Data export	Excel, CSV

Work condition

Operation system	Microsoft® Windows XP/Vista/7/8
Computer requirement	1GB RAM, 40GB HD, CPU 1.5GHz
Power supply	220V, 50HZ
Power consumption	850VA
Communication	RS232 USB
Dimensions	380mm×520mm×250mm (W×D×H)
Weight	18Kg

Sansure Biotech Inc.

Add: No.680, Lusong Road, Hi-tech Development Zone,
Changsha City, Hunan, 410205, P.R.C

T: 0086 731 8888 3176 F: 0086 731 8888 4876

E: info@sansure.com.cn

W: www.sansure.com.cn